

eSafe Virtual Appliance

eSafe Virtual Appliance

Vendor Details

Name: Aladdin Knowledge Systems

Address: HQ: 35 Efal St., Petah Tikva, 49511, ISRAEL

UK Office: Fairacres House 2-3, Fairacres Industrial Estate, Dedworth Road, Windsor, Berkshire England SL4 4LE

Telephone: HQ: +972-3-9781111

UK: +44-1753-622-266

Fax: HQ: +972-3-9781010

UK: +44-1753-622-262

Website: www.aladdin.com

Product: eSafe Virtual Appliance

Test Laboratory Details

Name: West Coast Labs, Unit 9 Oak Tree Court, Mulberry Drive
Cardiff Gate Business Park, Cardiff, CF23 8RS, UK

Telephone: +44 (0) 29 2054 8400

Date: April 2008

Issue: 1.0

Authors: Matt Garrad, Michael Parsons, Richard Thomas, Chris Elias,
Paul Jones

Contact Point

Contact names: Matt Garrad, Michael Parsons

Contact telephone number: +44 (0) 29 2054 8400

eSafe Virtual Appliance

Contents

Product Information	4
Test Report Executive Summary	6
West Coast Labs Conclusion and Certification Information	8
The Latest Enhancements to eSafe Virtual Appliance	9
Noteworthy Product Features	10

eSafe Virtual Appliance

Product Information

DeveloperStatement

eSafe is an innovative, high performance Web Security Gateway for Large Enterprises and Service Providers. It prevents users from being exposed to Web 2.0 threats, malicious and inappropriate content. eSafe inspects inbound and outbound traffic in real-time using unique, patented deep content analysis technologies.

<http://www.eSafe.com>

Business Benefits

1. More security - The only proven proactive threat protection

- a. Consistently blocks over 96% of previously unknown threats
- b. Eliminates over 99% of common and drive-by spyware
- c. Prevents zero-day vulnerabilities and exploits
- d. Transparent user experience

2. Unique inbound/outbound application control

- a. Regulates Internet-enabled applications traffic (P2P, IM, Skype, etc...)
- b. Prevents use of Anonymous Proxies for security circumvention
- c. Identifies and blocks spyware/malware information extrusion

<http://www.aladdin.com/esafe/application-level-threats.aspx>

<http://www.aladdin.com/esafe/anti-virus.aspx>

eSafe Virtual Appliance

Technical Benefits

1. Transparent deep web-content inspection
 - a. Patented NitroInspection™ technology
 - b. Wire-speed inspection of web pages including all HTML
 - c. Zero-latency with no impact on user experience
 - d. Complements firewalls, IPS, and desktop antivirus
2. Best performance & scalability - Starting at 5 million processed web pages per hour
 - a. Scalable for hundreds to millions of users
 - b. Multiple installation modes for seamless integration into customer's network
 - c. ISP-grade content security performance
 - d. Trusted by fortune 500 corporations

<http://www.aladdin.com/esafe/secure-web-gateway.aspx>

eSafe Virtual Appliance

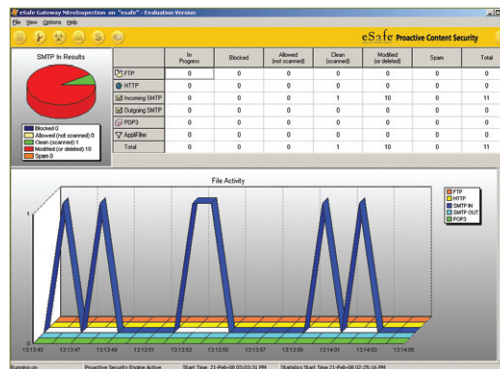
Test Report Executive Summary

The eSafe Virtual Appliance is designed to suit the requirements of SMBs to enterprise level organizations. Unlike many software-based security solutions that are installed onto an already extant OS, Virtual Appliance installs both the solution and its own hardened Linux-based system.

This process essentially transforms an existing blank machine into a dedicated security-based server with two deployment options: a gateway or an SMTP relay server. The key benefit of this approach is that there is no need to install multiple prerequisites, such as service packs and additional software. On completion of the relatively short installation, the solution requires only initial configuration data, such as IP addresses, before it begins to protect the client network.

It is important to note that hardware requirements for this are not prohibitive. While the eSafe Virtual Appliance will work best when installed to a machine of server level specification, for a smaller company the solution will work just as well on a higher specification desktop machine.

Once the solution is configured and providing its default level of protection, the administrator may begin the process of customizing the solution. Thanks to the wide range of settings available, the administrator can fine-tune Virtual Appliance to a high degree. This configuration can be carried out remotely via a web-based interface that is both informative and intuitive.



eSafe Virtual Appliance

Engineers at West Coast Labs tested against a variety of claims reflecting the wide range of functionality of the solution, which included the malware detection capability. During these tests the solution successfully blocked all traffic bearing malicious content over three individual protocols: HTTP, SMTP and FTP.

Further claims related to the ability of the solution to provide content filtration in several forms, including one test to ensure correct identification and detection of over 90% of spam email messages. Over a considerable test period, results proved that the correct identification of spam was running well above this published level.

Further content filtration ability was proved, with both inappropriate web traffic being blocked, and the ability to filter out and block peer-to-peer and instant messaging software.

Also tested was the ability of the Aladdin Security response team to send out updates to heuristics and virus definition files within a specified timeframe.

All claims were successfully tested and verified, and a full list of claims and the Test Report Summary may be found on the Claims Test Mark Scheme website.

eSafe Virtual Appliance is a comprehensive solution, it has a number of Checkmark certifications which further reinforce the claims made in the ICD Claims Document and reinforce Aladdin's commitment to protecting its customers.

eSafe Virtual Appliance

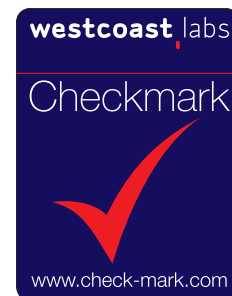
West Coast Labs Conclusion and Certification Information

Conclusion

Aladdin's eSafe Virtual Appliance is a comprehensive security solution. The level of customization on offer should ensure that the businesses can get the most from Virtual Appliance. Throughout testing it maintained a high standard of protection.

Certification

The eSafe Virtual Appliance is Checkmark certified for Anti-Virus Detection, Anti-Spyware, Anti-Trojan, Anti-Spam and URL Filtering. It is also accredited by West Coast Labs under the UK Government's Claims Tested Scheme. www.csia.gov.uk



eSafe Virtual Appliance

The Latest Enhancements to eSafe Virtual Appliance

In the last 12 months eSafe has added several important security technologies to fight new and emerging threats:

- a. Anti-Anonymizer
- b. HTTPS/SSL Inspection
- c. Non-intrusive, transparent Web Threats Analyzer (eSafe WTA) that enables organizations to evaluate their existing content security level, without changing anything in the network.

eSafe Virtual Appliance

Noteworthy Product Features

Handling anonymizers and unauthorized security policy circumvention attempts

eSafe provides complete control over encrypted web content, resulting in effective security policy. eSafe provides 3-layers of Anonymizer protection:

- a. Access level: eSafe blocks access to known anonymizer sites, and sites with un-trusted SSL certificates.
- b. Protocol level: eSafe identifies and blocks traffic generated by anonymizer sites and protocols, including “stealth” and “tunnelled” network protocols.
- c. Content level: eSafe Web SSL inspects encrypted HTTPS traffic identifying “unknown” anonymizer sites.

Transparent FTP content inspection

eSafe provides full and transparent support for native FTP (both active and passive). There is no need to reconfigure FTP clients and there are no limitations on authentication or any other FTP option. All files that are downloaded or uploaded using FTP will be inspected by eSafe.

Transparent real-time content modification

eSafe removes only suspicious elements from web pages containing suspicious code, while the rest of the content remains intact to avoid blocking legitimate hacked sites content, “grey” unknown sites, etc.

westcoast labs

US SALES

T+1 717 243 5575

EUROPE SALES

T+44 (0) 29 2054 8400

GLOBAL HEADQUARTERS

West Coast Labs
Unit 9 Oak Tree Court
Mulberry Drive
Cardiff Gate Business Park
Cardiff CF23 8RS, UK

T+44 (0) 29 2054 8400

F+44 (0) 29 2054 8401

E info@westcoast.com

W www.westcoastlabs.com